



PTM Battery Free Wireless Switches

Overview

PTM switches communicate wirelessly with the CERV2 to control ventilation. The energy of a finger press upon the ON or OFF side of the switch paddle generates sufficient energy to transmit the switch event. Additionally, as there is no battery to replace, there is also no maintenance.

The PTM365 switches come with a UL/CSA certified barrier plate and matching face plates. Surface mount backplates can be ordered separately. PTM265 switches come with a surface mount backplate. Cover plates not included.

Mount with flush mounting plate on any surface that is convenient (smooth surfaces for double sided tape (not included) or drillable for screw mounting).

Available Colors

Item	P/N
White Switch	PTM365UW
White Surface Mount Plate	PTM3651GFW
Gray Switch	PTM365UG
Gray Surface Mount Plate	PTM3651GFG
Almond Switch	PTM265UA
Ivory Switch	PTM265UV
Black Switch	PTM265UB

Specifications

Style	Single decorator rocker
Colors	Match Leviton switch colors

Power Generation	Electrodynamic Energy Harvester
------------------	---------------------------------

Radio Frequency	902MHz
Transmission Range	24m (80ft) indoor typical, 100m (330ft) line of sight

Weight	85g (3oz)
Dimensions	115 x 71 x 20 mm (4.5 x 2.8 x 0.8")
Life Cycle	50,000 actuations

Agency Listing and Compliance	
FCC Part 15.231 - Remote Control Transmitter	
IC RSS-210	

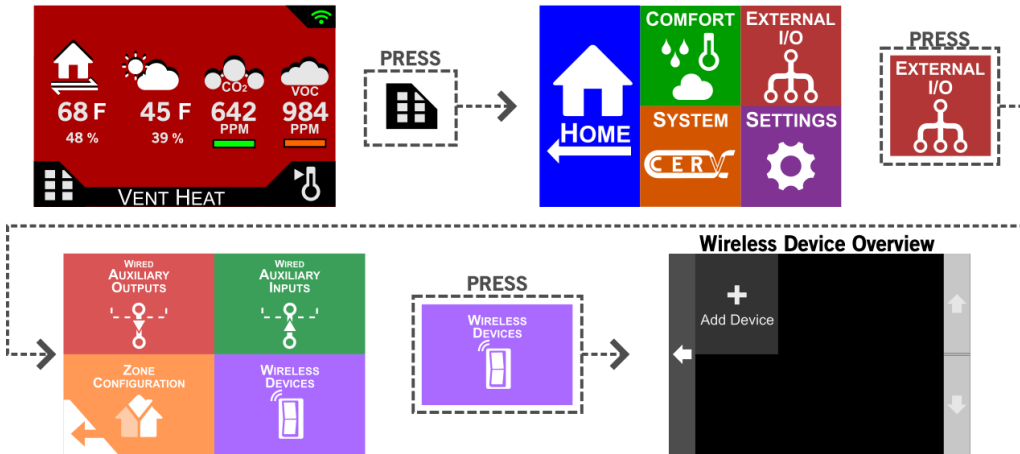


Installation

The wireless wall switches may be mounted on any flat surface with the surface mount backplate using double sided tape or screws. Switches can also be installed in standard electrical outlet boxes. Follow the steps below for setting up the wireless switch with the CERV2. Generally, it is easier to add the wireless switch before mounting in their final location.

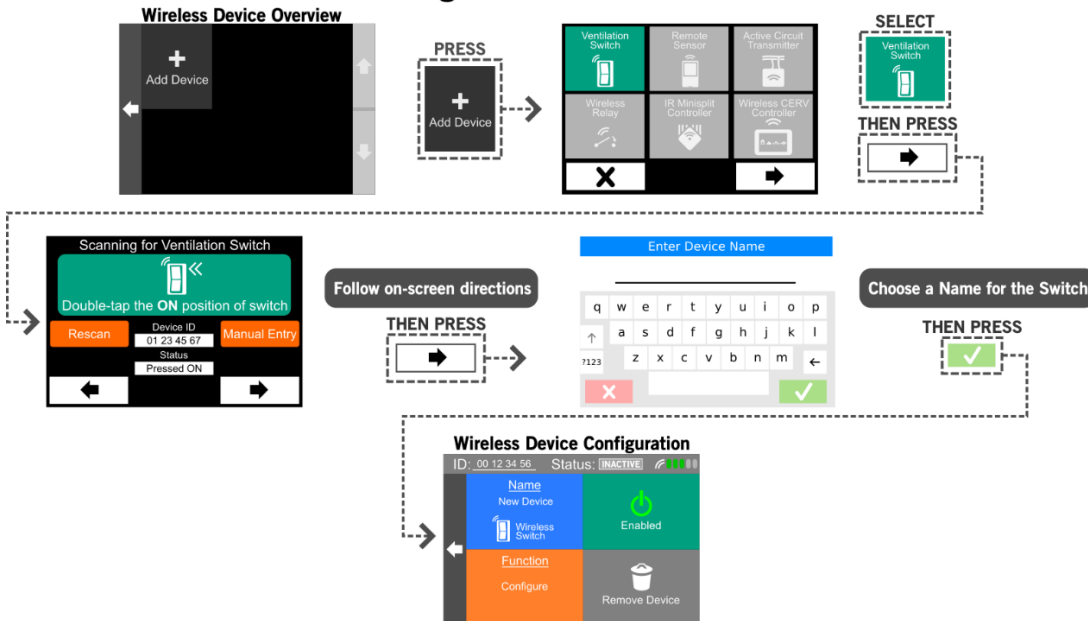
To add a wireless switch, navigate to the wireless devices menu on the CERV2's touchscreen as shown below. If there are wireless switches on this screen they may already have been added.

Wireless Device Setup



To add the wireless switch, press Add Device and then select Wireless Switch as shown below. Directions will appear for pairing the switch and naming it.

Adding a New Wireless Switch



Once the switch has been properly paired, ensure that it is enabled by toggling the enabled button if needed. The switch is then ready to be configured. Click the **Configure** button to set the vent time length, fan speed, and link to any zones if applicable. Additional information can be found in the CERV2 Controller Guide and Zone Guide.