



Wireless Occupancy Sensor

Overview

The Wireless Occupancy Sensor allows the CERV to be intelligently controlled by the occupancy status of a room.

The occupancy sensor is easily customizable and flexible for many potential scenarios. The sensor is generally used to trigger ventilation when motion is detected, but may additionally be configured for functions such as heating, cooling, recirculation, or halt operation.

The occupancy sensor can be easily installed on a wall, ceiling, or countertop, and contains a replaceable battery with approximately 5 years of continuous operation.

Specifications

Power Supply	3V Lithium Battery
Battery Type	CR123A
Battery Life	5 Years

Radio Frequency	902MHz
Transmission Range	Up to 100ft (30m)

Weight	54g (1.9oz)
Dimensions	65 x 65 x 39 mm (2.56 x 2.56 x 1.53")

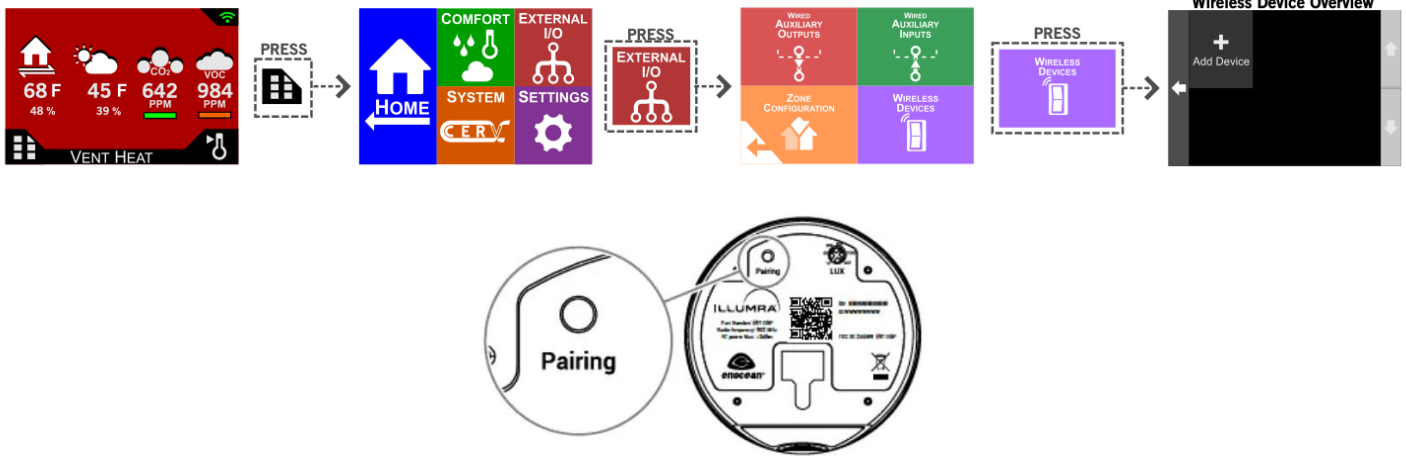
Agency Listing and Compliance	
FCC Part 15.231 - Remote Control Transmitter IC RSS-210	



Pairing the Wireless Occupancy Sensor to the CERV2

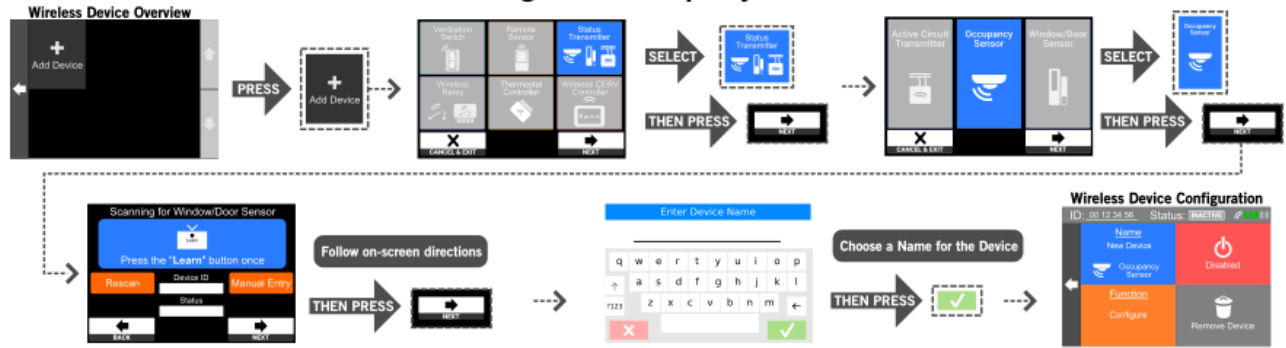
On the CERV2's touchscreen controller, follow the steps below to get to the pairing screen. The device should be paired before mounting. After pairing the device to the CERV, it may take up to 5 minutes to send an "occupied" signal.

Wireless Device Setup



Note: For the step below, the "Pairing" button for the occupancy sensor can be found on the back of the device – use a paperclip or pen to press the button.

Adding A New Occupancy Sensor



Available Active Circuit Transmitter Functions

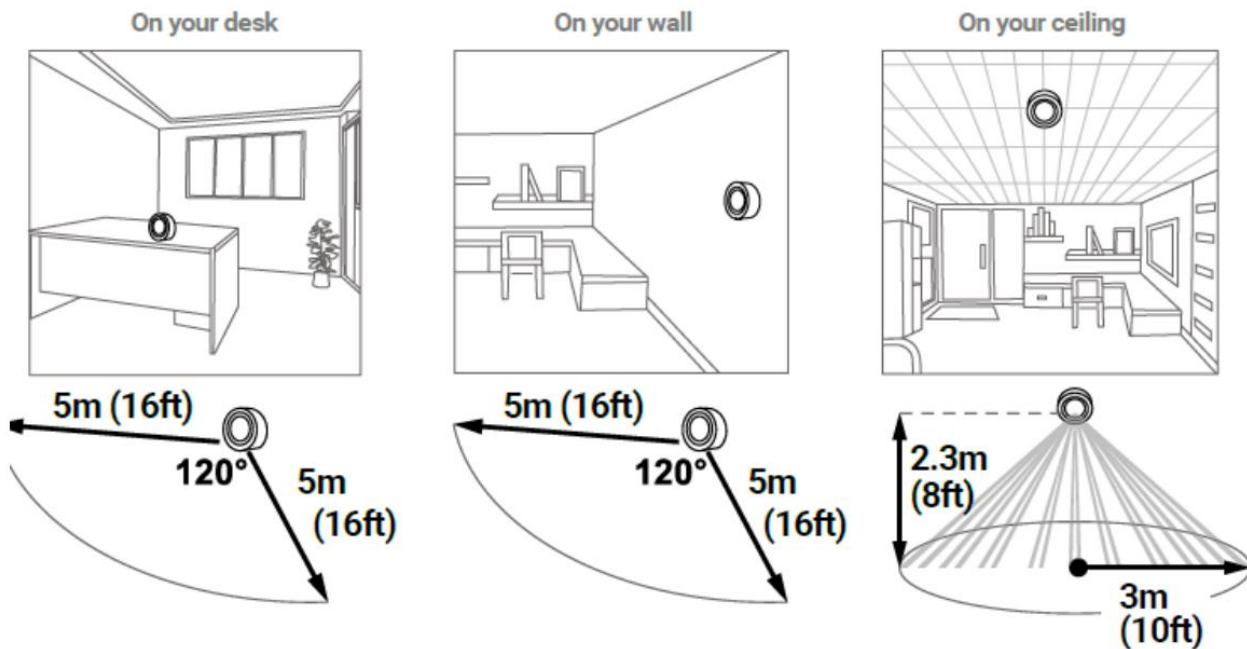


Example: Ventilate when Room is Occupied



Installation

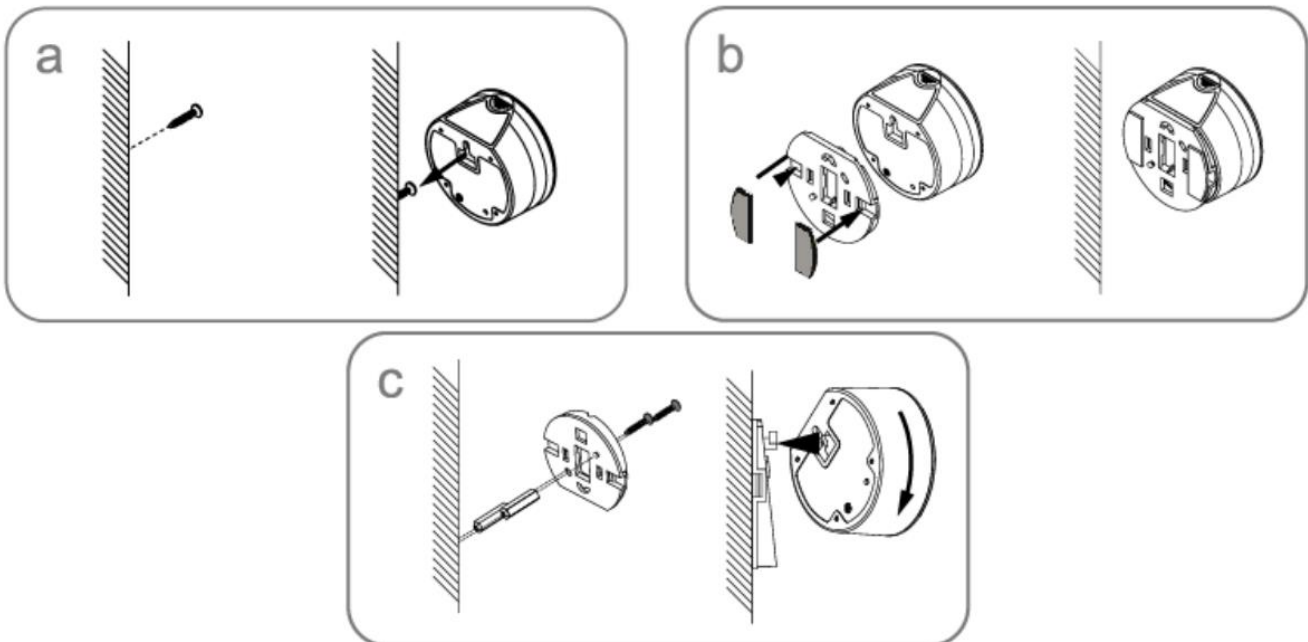
The Wireless Occupancy Sensor may be installed in several ways – tabletop, mounted to a wall, or ceiling mounted.



Variations for wall and ceiling mounting may be found below.

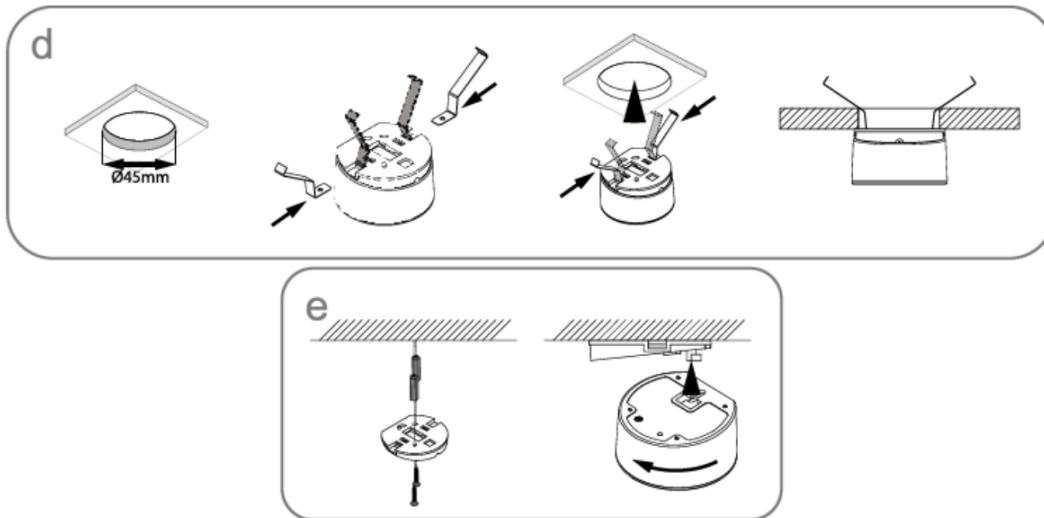
Wall Mounting

- Insert a screw into the wall, then using the notch on the back of the occupancy sensor, hang the sensor on the wall
- Using adhesive mounting pads
- Screw the occupancy sensor's backplate to the wall, then attach the sensor to the backplate



Ceiling Mounting

- d) Drill a 45mm diameter hole in the thin ceiling to insert the included fastening hooks and mount the support in them.
- e) Screw the occupancy sensor's backplate to the ceiling, then attach the sensor to the backplate



Battery Replacement

The occupancy sensor's battery typically lasts up to 5 years before replacement. When the battery starts to get low, the occupancy sensor will blink its front LED twice every 10s.

In order to replace the battery, open the product following the below instructions. Do not touch the sensing element located in the middle of the circuit board.



Walk Test Mode

When the sensor is powered-up for the first time (after removing the battery), the sensor will enter Walk Test Mode. For 3 minutes, the LED will flash every time a motion is detected. Use this feature to find the best location for your sensor.

A plastic shield with removable sections is included with the sensor. This shield can be used to block the photo sensor from detecting motion in certain sections of the viewing area. For instance, motion in a hallway outside of a bathroom can be blocked from detection.